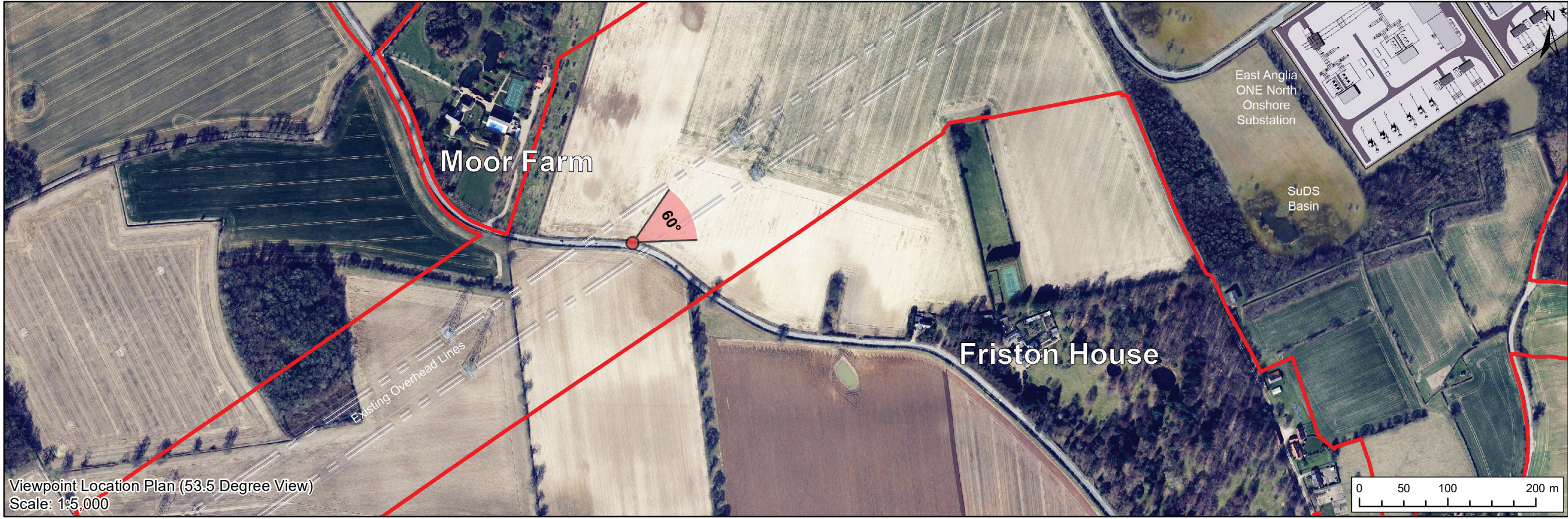


Viewpoint Location Plan Baseline Panorama (90 Degree View)
Scale: 1:20,000



Viewpoint Location Plan (53.5 Degree View)
Scale: 1:5,000

Legend

- Proposed Onshore Development Area
- Indicative East Anglia TWO Substation Location
- Indicative East Anglia ONE North Substation Location
- Indicative National Grid GIS Substation Location

Viewpoint:

- 90 Degree Field of View Viewpoint
- 53.5 Degree Field of View Viewpoint



Baseline Photograph (90 Degree Field of View)



2	11/09/2019	LA	Second Issue (OPEN)	Prepared:	LA	Scale @ A3
1	06/09/2019	LA	First Issue (OPEN)	Checked:	SM	
Rev	Date	By	Comment	Approved:	LT	

Source: © Crown copyright and database rights 2019. Ordnance Survey 100031872.
This map has been prepared to the best of our knowledge at the time of issue, and has been prepared for your information only.
Please consult with the SPN Onshore GIS team to ensure the content is not correct before using the information contained on this map.
To the fullest extent permitted by law, we accept no responsibility or liability, whether in contract, tort (including negligence) or otherwise in respect of any errors or omissions in the information contained in the map and shall not be liable for any loss, damage or expense caused by such errors or omissions.

**East Anglia TWO with
National Grid GIS Substation**
Viewpoint 8: B1121 Saxmundham Road,
north of Friston

Drg No	EA2-DWF-ENV-REP-IBR-000921	
Rev	2	Coordinate System: BNG Datum: OSGB36
Date	11/09/19	
Figure	29.40a	





Visual representation of 15th year of operational phase
Photomontage of the proposed East Anglia TWO and National Grid GIS Substation

View flat at a comfortable arm's length

OS reference:	640477 E 260862 N	Horizontal field of view:	53.5° (planar projection)	Camera:	Canon EOS 5D Mark II
Eye level:	22 m AOD	Principal viewing distance:	812.5 mm	Lens:	50mm (Canon EF 50mm f/1.4)
Direction of view:	60°	Paper size:	841 x 297 mm (half A1)	Camera height:	1.5 m AGL
		Correct printed image size:	820 x 260 mm	Date and time:	18/06/2019, 16:48:04

Contains Ordnance Survey digital data © Crown copyright, All rights reserved 2019 Licence number 0100031673

Figure: 29.40c
Viewpoint 8: B1121 Saxmundham Road, north of Friston



Visual representation of 1st year of operational phase
Photomontage of the proposed East Anglia TWO, East Anglia ONE North and National Grid GIS Substation

View flat at a comfortable arm's length

OS reference:	640477 E 260862 N	Horizontal field of view:	53.5° (planar projection)	Camera:	Canon EOS 5D Mark II
Eye level:	22 m AOD	Principal viewing distance:	812.5 mm	Lens:	50mm (Canon EF 50mm f/1.4)
Direction of view:	60°	Paper size:	841 x 297 mm (half A1)	Camera height:	1.5 m AGL
		Correct printed image size:	820 x 260 mm	Date and time:	18/06/2019, 16:48:04

Contains Ordnance Survey digital data © Crown copyright, All rights reserved 2019 Licence number 0100031673

Figure: 29.40d
Viewpoint 8: B1121 Saxmundham Road, north of Friston



Visual representation of 15th year of operational phase
Photomontage of the proposed East Anglia TWO, East Anglia ONE North and National Grid GIS Substation

View flat at a comfortable arm's length

OS reference:	640477 E 260862 N	Horizontal field of view:	53.5° (planar projection)	Camera:	Canon EOS 5D Mark II
Eye level:	22 m AOD	Principal viewing distance:	812.5 mm	Lens:	50mm (Canon EF 50mm f/1.4)
Direction of view:	60°	Paper size:	841 x 297 mm (half A1)	Camera height:	1.5 m AGL
		Correct printed image size:	820 x 260 mm	Date and time:	18/06/2019, 16:48:04

Contains Ordnance Survey digital data © Crown copyright, All rights reserved 2019 Licence number 0100031673

Figure: 29.40e
Viewpoint 8: B1121 Saxmundham Road, north of Friston